

City of Newport Beach Recycling Guide



Organic Waste Recycling Laws



In 2016, the State of California adopted Senate Bill 1383 (SB 1383) Short-lived Climate Pollutants into law. SB 1383 requires all cities in California to reduce organic waste sent to landfills by 75% by January 1, 2025. SB 1383 also sets a target of rescuing 20% of edible food currently disposed of in landfills.

Furthermore, SB 1383 sets and regulates maximum levels of contamination found in each waste and recycling stream, which ensures materials are disposed of in correct containers and properly processed. As such, the City of Newport Beach is requiring all residents to participate in the recycling program to minimize landfill disposal and to comply with state law.

Coming February 2022!

CR&R Environmental Services, in partnership with the City of Newport Beach, will deliver new green lid organic carts and in-home kitchen food scrap pails to all residents, beginning February 2022. City-wide delivery is expected to take 12 weeks with additional information forthcoming. For any immediate questions or concerns, please contact NewportBeach-Recycles@crrmail.com.



Environmental Benefits

When organic wastes such as food scraps and yard trimmings are disposed of in landfills, they decompose and produce methane, a greenhouse gas (GHG) that is 84 times more potent than carbon dioxide. SB 1383 requires all cities in California to not only provide organic waste collection services to all residents and businesses, but also requires monitoring of items sent to the landfill for disposal.

SB 1383 requires organic materials to be recycled whether it be through composting, which create soil amendments, or by using anaerobic digestion facilities, a process that creates biofuel and electricity. Minimizing landfill disposal will reduce GHGs and extend landfill capacities for future generations.



About Your New Kitchen Food Scrap Pail

Collect food scraps using the kitchen food scrap pail that was distributed by CR&R. Scrape food prep scraps and leftovers from your plate or cutting board into your container. Spoiled or stale food from your fridge and cupboards can also be placed in the container. When the kitchen food scrap pail is full, empty your food scraps into your green lid organics cart. Your cart will be collected on a weekly basis on your normal collection day.

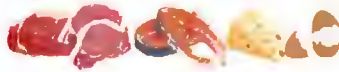


DO NOT place the kitchen food scrap pail outside for collection.

Acceptable Items Include:



Fruits & Vegetables



Meat • Fish • Dairy



Breads & Grains



Fats, Oils, Grease
& Food Soiled Paper

Tips For Using Your Kitchen Food Scrap Pail

- Keep your kitchen food scrap pail in a convenient location in your kitchen. Placing your pail in a visible area serves as a visual reminder to recycle your organics.
- The kitchen food scrap pail can be used as is or lined with newspaper, paper bags or a compostable bag. Look for the BPI logo or the term "compostable" on certified products at local retailers. Lining the container can help make cleaning it easier.
- To prevent odor, you can store your food scraps in the freezer for collection day.



Please note your pail is dishwasher safe.

What Materials Can I Place In My Green Lid Organics Cart?

Acceptable Items Include:



Food Scraps | Fats•Oils•Grease | Food-Soiled Paper | Yard Trimmings (flowers, leaves, grass, plants)

Tips For Using Your Green Lid Organics Cart

- Start with yard trimmings such as leaves, grass clippings, and/or newspapers at the bottom to prevent food scraps from adhering.
- Alternate layers of food scraps and yard trimmings to help keep your cart clean.

Frequently Asked Questions

How do I collect food scraps from my kitchen?

The easiest way to collect your food scraps is with a countertop container, such as the food scrap kitchen pail that CR&R will be distributing to all residents. Add food scraps as you prepare meals and when full, empty it in your green lid organics cart.

Can I put meat, fish, and spoiled food in my green lid organics cart?

Yes. These items are acceptable in the green lid organics cart.

Can I use plastic bags in my green lid organics cart?

Only compostable bags, newspaper liner or brown paper bags can be used to line your kitchen food scrap pail and are acceptable in your green lid organics cart.

Where can I find out more information about the residential organics program?

Please visit our website at www.crrwasteservices.com for more information on services available and for additional information on all recycling programs.

Tips For Using Your Blue Lid Recycling Cart

- Only put loose recycling items in your blue lid recycling cart. Do not place items in plastic bags.
- Do not put polystyrene, window glass, ceramics or plastic film/food wrappers in your blue lid recycling cart.
- Lids and labels do not need to be removed from items.
- Flatten cardboard boxes to create more room and prevent blockages in your blue lid recycling cart.



Preventing Contamination In Your Blue Lid Recycling Cart

- Rinse jars to remove residual food waste.
- Empty liquids from items before placing them in your blue lid recycling cart.
- Trash, organic material, and food scraps should not be placed in your blue lid recycling cart.
- Plastic utensils, plastic bags and mixed products (containing paper/plastic or metal/plastic) should be placed in your black lid landfill cart.



Remember On Collection Day

- 1 The carts should be placed at the curbside no later than 6:30 a.m. on collection day and removed from the curbside within twelve (12) hours after service.
- 2 The carts should be placed with the handles and wheels facing towards your home.
- 3 Place carts side-by-side approximately one (1) foot apart and at least three (3) feet from any obstruction (e.g., vehicles, fire hydrants, trees, or mailboxes).
- 4 All refuse material must be placed within the appropriate cart. Items placed on top of or outside of the carts will be tagged and considered a bulky item (chargeable after the first three (3) weeks of the new recycling program).
- 5 When possible, store your cart in the shade during warm weather.



What Goes Where

RECYCLABLES

- Aluminum
- Cardboard
- Glass
- Metal
- Paper
- Plastic



ORGANICS CART & PAIL

From The Yard

- Flowers
- Grass
- Leaves
- Prunings
- Weeds



From The Kitchen

- Fruits
- Vegetables
- Meat
- Fish
- Dairy
- Grains
- Fats, Oils Grease
- Food-Soiled Paper
- Coffee Grounds and Filter



LANDFILL

- Broken Glass/Mirrors
- Ceramics
- Diapers
- Flexible Packaging
- Paper Towels/Tissue Paper
- Pet Waste/Cat Litter
- Polystyrene
- Waxed Paper



**No
Hazardous
Waste**

Holiday Schedule: Non-Collection Days

New Year's Day Memorial Day Independence Day Labor Day Thanksgiving Day Christmas Day

If the Holiday falls on a Saturday or Sunday, trash will be collected on your normal collection day with no delays to your pickup. If the Holiday falls during the work week, collection for the remainder of the week will be delayed by one day. For example, if Independence Day falls on a Monday, and your normal collection day is on Thursday, your pickup for that week will be on Friday.

Customer Service
949.667.4158
crwasteservices.com

CR&R
INCORPORATED
environmental services
the face of a greener generation